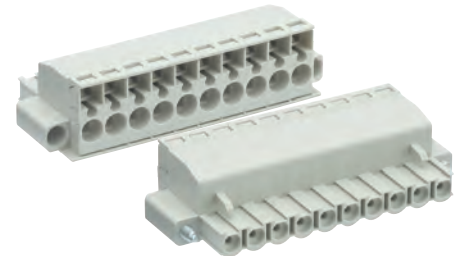
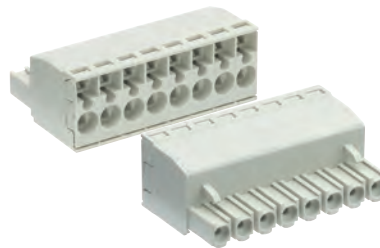


Pluggable PCB terminals series 8113 / 8213, spring clamp system

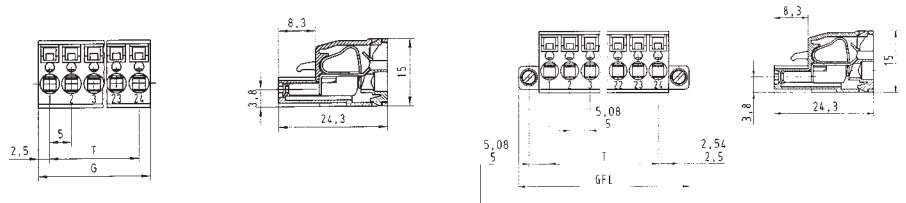
pitch 5.00 / 5.08 mm

IEC	250 V 4kV cat.3 400 V 4kV cat.2 1000 V 4kV cat.1	12 A	0.14 - 2.5 mm ² (Stranded) 0.14 - 2.5 mm ² (Solid)
UL	300 V	12 A	22 - 12 AWG
CSA		12 A	22 - 12 AWG
Wire Strip Length			11.0 mm



See Technical Data section for screw material options

Approvals:



series 8113 BFK/BFK F pitch 5.00 mm

Box Qty	G	T	Pole
100	10	5	2
100	15	10	3
50	20	15	4
50	25	20	5
50	30	25	6
50	35	30	7
50	40	35	8
50	45	40	9
50	50	45	10
50	55	50	11
50	60	55	12
50	65	60	13
50	70	65	14
50	75	70	15
50	80	75	16

unmarked	marked	unmarked with screw flange	marked with screw flange
Part Number	Part Number	Part Number	Part Number
25.820.3253.0	25.820.0253.0	25.821.3253.0	25.821.0253.0
25.820.3353.0	25.820.0353.0	25.821.3353.0	25.821.0353.0
25.820.3453.0	25.820.0453.0	25.821.3453.0	25.821.0453.0
25.820.3553.0	25.820.0553.0	25.821.3553.0	25.821.0553.0
25.820.3653.0	25.820.0653.0	25.821.3653.0	25.821.0653.0
25.820.3753.0	25.820.0753.0	25.821.3753.0	25.821.0753.0
25.820.3853.0	25.820.0853.0	25.821.3853.0	25.821.0853.0
25.820.3953.0	25.820.0953.0	25.821.3953.0	25.821.0953.0
25.820.4053.0	25.820.1053.0	25.821.4053.0	25.821.1053.0
25.820.4153.0	25.820.1153.0	25.821.4153.0	25.821.1153.0
25.820.4253.0	25.820.1253.0	25.821.4253.0	25.821.1253.0
25.820.4353.0	25.820.1353.0	25.821.4353.0	25.821.1353.0
25.820.4453.0	25.820.1453.0	25.821.4453.0	25.821.1453.0
25.820.4553.0	25.820.1553.0	25.821.4553.0	25.821.1553.0
25.820.4653.0	25.820.1653.0	25.821.4653.0	25.821.1653.0

series 8213 BFK/BFK F pitch 5.08 mm

Box Qty	G	T	Pole
100	10.16	5.08	2
100	15.24	10.16	3
50	20.32	15.24	4
50	25.40	20.32	5
50	30.48	25.40	6
50	35.56	30.48	7
50	40.64	35.56	8
50	45.72	40.64	9
50	50.80	45.72	10
50	55.88	50.80	11
50	60.96	55.88	12
50	66.04	60.96	13
50	71.12	66.04	14
50	76.20	71.12	15
50	81.28	76.20	16

unmarked	marked	unmarked with screw flange	marked with screw flange
Part Number	Part Number	Part Number	Part Number
25.840.3253.0	25.840.0253.0	25.841.3253.0	25.841.0253.0
25.840.3353.0	25.840.0353.0	25.841.3353.0	25.841.0353.0
25.840.3453.0	25.840.0453.0	25.841.3453.0	25.841.0453.0
25.840.3553.0	25.840.0553.0	25.841.3553.0	25.841.0553.0
25.840.3653.0	25.840.0653.0	25.841.3653.0	25.841.0653.0
25.840.3753.0	25.840.0753.0	25.841.3753.0	25.841.0753.0
25.840.3853.0	25.840.0853.0	25.841.3853.0	25.841.0853.0
25.840.3953.0	25.840.0953.0	25.841.3953.0	25.841.0953.0
25.840.4053.0	25.840.1053.0	25.841.4053.0	25.841.1053.0
25.840.4153.0	25.840.1153.0	25.841.4153.0	25.841.1153.0
25.840.4253.0	25.840.1253.0	25.841.4253.0	25.841.1253.0
25.840.4353.0	25.840.1353.0	25.841.4353.0	25.841.1353.0
25.840.4453.0	25.840.1453.0	25.841.4453.0	25.841.1453.0
25.840.4553.0	25.840.1553.0	25.841.4553.0	25.841.1553.0
25.840.4653.0	25.840.1653.0	25.841.4653.0	25.841.1653.0

Custom Marking Available
More poles available on request